

# SENCOR®

SKS 7176GD / SKS 7170GG  
SKS 7177CH / SKS 7178BK



## SMART BLUETOOTH KITCHEN SCALE

Translation of the original manual

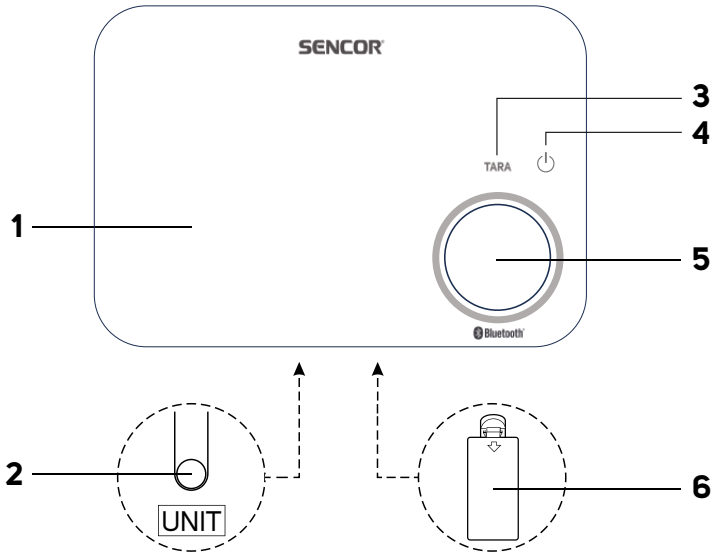


**SENCOR®**

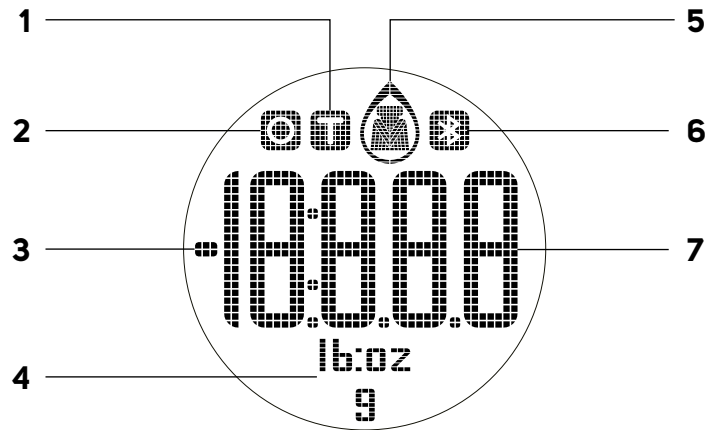
**SKS 7176GD / SKS 7170GG  
SKS 7177CH / SKS 7178BK**



**A**



**B**



### Important Safety Instructions

#### READ CAREFULLY AND STORE FOR FUTURE USE.

- This appliance is designed for household use. Do not use it for commercial purposes, for weighing animals or for other purposes for which it is not intended.
- This appliance may be used by children and by persons with physical, sensory or mental impairments or by inexperienced persons, if they are properly supervised.
- Children must be supervised to ensure that they do not play with the appliance.
- Do not use the appliance outdoors, place it on unstable surfaces, on an electric or gas stove, in the vicinity of an open flame or other sources of heat.
- Do not expose the appliance to direct sunlight or high humidity and do not use it in excessively dusty environments.
- In use, it must be ensured that the appliance is placed on an even, smooth, hard and stable surface. Otherwise, inaccuracies in weighing may occur.
- If the maximum weighing capacity is exceeded, remove the ingredient or object of excessive weight from the weighing area to avoid possible damage to the appliance.
- Do not use the appliance to support various items. When storing, it must be ensured that no objects are placed on the appliance.
- Always use new batteries of the same type. Never combine old and new batteries or batteries of various types. Never put batteries in a fire, short-circuit or damage them in any way. Dispose of them in an environmentally friendly manner at the end of their lifespan. Never dispose of batteries in municipal waste.
- If you will not be using the appliance for an extended period of time, remove the batteries. If the battery were to leak into the interior of the appliance, the appliance could be damaged.
- Do not use rechargeable batteries to power this appliance.
- Keep batteries out of the reach of children, because they may present a danger in their presence. If the child swallows the battery, immediately seek medical help.
- Keep the appliance clean. When cleaning, follow the instructions in the chapter "Cleaning and maintenance". Do not immerse the appliance in water or other liquids or rinse it under running water.
- Do not repair or modify the appliance yourself. All repairs should be carried out by an authorised service centre. Tampering with the appliance may result in the loss of your legal rights regarding faulty performance or warranty for quality.

#### EXPLANATION OF SYMBOLS PLACED ON THE PRODUCT OR IN THE ACCOMPANYING DOCUMENTATION



The product meets all the basic requirements of the applicable EU directives.




This symbol on products or original documents means that used electric or electronic products must not be added to ordinary municipal waste.

# Smart Bluetooth Kitchen Scale

## User Manual

- Thank you for purchasing our SENCOR product; we hope it will serve to your satisfaction.
- Prior to using this appliance, please read the user manual thoroughly, even in cases when you are already familiar with the use of similar types of appliances. Use the appliance only as described in this user manual. Keep the manual for future reference. If you pass the appliance on to another person, ensure that this user manual is included.
- Carefully unpack the appliance and make sure not to discard any part of the packaging material until you have found all its components. It is recommended to keep the original packaging, packing material, receipt and confirmation of the extent of the seller's liability or warranty certificate at least for the duration of the legal right of defective performance or quality guarantee. When transporting the appliance, we recommend packaging it again in the original box provided by the manufacturer.

### DESCRIPTION OF THE APPLIANCE

- A1** Weighing and measuring area
- A2** Button for switching weighing and measuring units (on the bottom)
- A3** **TARA** button
- A4**  button to switch the scale on/off
- A5** Display
- A6** Battery compartment (on the bottom)

### DESCRIPTION OF THE DISPLAY

- B1** Tara function icon (weighing)
- B2** Zero value icon
- B3** Negative sign  
Shown in **TARA** mode after removing the food container from the scale
- B4** Display of the unit:  
lb:oz = Imperial weight unit  
g = Metric weight unit
- B5** Weight weighing icon
- B6** Bluetooth icon
- B7** Weight indication

### PURPOSE OF USE

The kitchen scale is designed to be used for weighing food and small items up to 8000 g.

Thanks to the connection with the Sencor Food application on your smartphone, you get not only weight data, but also the energy and nutritional value of the weighted food in a given amount.

### BEFORE FIRST USE

- Take the kitchen scale out of the packaging and remove all packaging materials, advertising labels or protective foils.
- Wipe the kitchen scale with a soft cloth slightly dampened in warm water. Wipe with a dry cloth.

### POWER SUPPLY AND BATTERY REPLACEMENT



The scale is powered by alkaline batteries (2x 1.5 V AAA). The batteries are included and are already inserted in the battery compartment at the bottom of the scale. In order to protect against discharge and damage to the scale, they are protected with insulating tape and this tape must be removed before using the scale.

As soon as the display shows "**Lo**", both batteries need to be replaced with new ones. Open the battery compartment cover and remove the discharged batteries. Insert new batteries of the same type. Observe the correct polarity, which is shown on the bottom of the battery compartment, and fit the cover.

### CHOICE OF WEIGHT UNITS

The scale allows you to switch between metric and Anglo-American units using the **UNIT** button on the bottom of the scale. Depending on the set mode, icons of metric units (**g**) or Anglo-American units (**lb:oz**) will appear on the display.

### TURNING THE SCALE ON/OFF

- Press the  button to turn the scale on. Wait until "**0**" is shown on the display.
- Long press the  button to switch off the scale.
- The scale automatically turns off after a few minutes of inactivity.

### WEIGHING

- Place the scale on a flat and stable surface. Touch the weighing area to switch the scale on. Wait until "**0**" is shown on the display.
- Place the ingredients to be weighed in the centre of the area. The display will show its weight.



#### Note:

We recommend not to put the ingredients directly on the scale, but to use a food foil, a bowl or another container. If you will be weighing ingredients in a bowl, press the **TARA** button to reset the weight of the bowl on the scale.

### TARA FUNCTION

The **TARA** function is used when you want to gradually weigh several ingredients in one container without removing the container from the scale. This function will automatically subtract the weight of the container from the total weight of the ingredients.

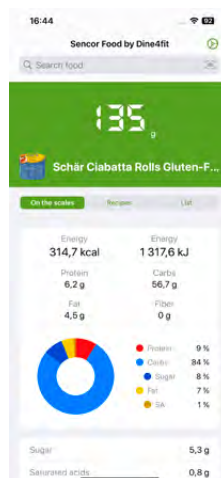
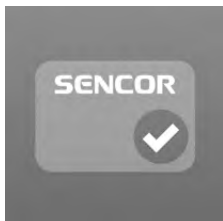
1. Place the empty container on the scale. The display will show its weight. Pressing the **TARA** button will reset the value and the "**T**" symbol lights up.
2. Put the first food into the container. The display will show its weight. Pressing the **TARA** button will reset the value and the "**T**" symbol lights up. The weight of the first food is stored in the memory and the scale is ready for further weighing.
3. Put the second food in the container. The display will show its weight. Press the **TARA** button to display the sum of the weight of the first and second ingredient. Pressing **TARA** again saves the sum to memory and resets the display to zero. The "**T**" symbol remains lit.
4. Add more ingredients in the same way up to the maximum weight capacity (8000 g).
5. Once you remove the food container from the scale, a negative value will appear on the display.

### ERROR MESSAGES

Display	What to do
Lo	Batteries are flat. Replace the batteries. More information in chapter <b>POWER SUPPLY AND BATTERY REPLACEMENT</b> .
Err	You have exceeded the maximum weighing capacity of the scale (8000 g).

## CONNECTING THE SCALE AND YOUR SMART DEVICE

- The scale is equipped with Bluetooth wireless technology, which in conjunction with the free **Sencor FOOD** app installed on your smart device offers direct access to a rich and regularly updated database of foods and their nutritional values.
- The **Sencor FOOD** app was developed in collaboration with the creators of the Calorie Tables / Dine4Fit app and is designed for smartphones running iOS (version 13 and above) or Android (version 5 and above). When using the app, the phone must be connected to the internet.



- The connection of the scale to the phone takes place automatically after starting the application. To pair, it is sufficient for the Bluetooth function to be turned on on the smart device. If the app does not find the scale, it will actively prompt you to try to reconnect the scale.
- When the scale is paired with the application, the Bluetooth icon is lit on the display. When the scale is not paired with the app or the connection has been broken, the Bluetooth icon will be extinguished.



### Note:

The scale can only connect to one mobile device at a time. If you have problems with pairing, make sure that there is no other device within reach that is actually actively connected to the scale.

The app offers three weighing modes:

### 1. "On the Scale" Mode

Displays the weight of the currently weighed item. After you tell the scale what food you weigh using the "Search Food" field, it will display the nutritional values of the food in relation to the current weight.

### 2. "Recipes" mode

In this section you will find recipes that we have prepared for you. The recipes are compiled using SENCOR food processors. The recipe will guide you through the preparation and help you to record the actually weighted weights of the individual ingredients in the List tab.

### 3. "List" Mode

It allows you to determine the aggregate nutritional value of more food. This mode is useful, for example, when preparing a dish according to a recipe. Gradually add the food to the scale, using the "Search Food" field to enter what food it is. Once you have determined the weight and type of food, use the "+ Add food to list" button to add it to the total nutritional sum. Use the TARA button on the scale for adding to weight as needed during weighing. The scale continuously shows the total weight of the ingredients and calculates the weights of the individual nutritional components (for example, how many grams of carbohydrates the weighed food contains in total) throughout the weighing in the "List" mode.

## Entering/Searching for a Weighed Food

You can find a summary of the nutritional values of a weighed food by entering the name of the food in the "Search Food" status bar. Click on the status bar and the cursor and keyboard will appear. Enter the name of the food or a keyword, the application will search for the relevant food or a list of foods with a keyword, and selecting a food will display its nutritional values. You can find the nutritional summary more quickly, practically and accurately by scanning a unique EAN barcode from the food packaging. Click on the barcode icon to the right of the "Search Food" status bar and scan the barcode. A summary of nutritional values is displayed.



### Note:

If you didn't allow the app to use the camera and video recording feature when you installed the app (or when adjusting the settings), enable the feature. Otherwise it will not be possible to scan the barcodes.



### Note:

The **Sencor FOOD** app is linked to the Calorie Tables app. At the end of the weighing, you can enter your food into your diet in the Calorie Tables with one click and keep a long-term overview of your food intake (ATTENTION: Some advanced features of the Calorie Tables app may be subject to a fee).

## Possible Problems with the App and Their Solutions

The app does not search for the weighed food item.

- Please check your current internet connection.

Bluetooth connection failed.

- Check that only one device is connected to the scale.
- Check that the Bluetooth version on your device is 4.0 and later.

The data from the scale cannot be displayed in the application.

- Check that you have enabled the Bluetooth feature on your phone/tablet.
- Check that you are within the range of the Bluetooth signal.
- Check that the batteries in the scale are not dead. Replace the batteries with new ones.
- Restart the app.
- Reset the operating system and the Bluetooth connection.

If you are near other devices transmitting in the same frequency band as Bluetooth (Wi-Fi router, DAB radio, microwave oven, other smart phone, etc.), interference may occur. Try moving the scale or smart device to a different location.

## CLEANING AND MAINTENANCE

- Use a soft sponge slightly dampened in warm water to clean the scale. Wipe dry with a clean cloth.
- Do not use wire cloths, abrasive cleaners, thinners, etc. for cleaning. Otherwise the surface may be damaged.
- Do not immerse the scale in water or other liquid or rinse it under running water. The outer body of the appliance is not intended to be washed in a dishwasher.
- Never dry the scale over a heat source such as a stove, electric or gas stove, etc.

## STORAGE

- After finishing using the scale, store it in a suitable place out of the reach of children. Keep the stored deep fryer away from extreme temperatures, direct sunlight and excessive humidity and do not store it in an overly dusty environment.
- If you will not be using the scale for an extended period of time, remove the batteries.

## TECHNICAL SPECIFICATIONS

Power source .....2x 1.5 V AAA batteries  
Weight capacity (maximum load capacity)..... 8 kg / 17.6 lb  
Weighing accuracy .....1 g / 0.1 oz  
Choice of units..... g / lb:oz

SENCOR hereby declares that the radio device type SKS 7176GD / SKS 7170GG / SKS 7177CH / SKS 7178BK conforms to the 2014/53/EU directive. The full text of the EU Declaration of Conformity is available at: [www.sencor.eu](http://www.sencor.eu).

## INSTRUCTIONS AND INFORMATION ON DISPOSAL OF USED PACKAGING MATERIAL

Dispose of used packaging material at the location designated by the municipality for waste disposal.

## DISPOSAL OF USED ELECTRICAL AND ELECTRONIC EQUIPMENT

Used electrical and electronic products must not be added to ordinary municipal waste. For proper disposal and recycling of these products, deliver them to designated collection points. Alternatively, in some European Union states or other European countries the products can be returned to the local retailer when buying an equivalent new product. By properly disposing of this product, you help preserve valuable natural resources and contribute to preventing potential negative impacts on the environment and human health resulting from improper waste disposal. For more details, contact your local authority or nearest collection point. Fines may be imposed for improper disposal of this type of waste as per national regulations.

### For Business Entities in European Union States

To dispose of electric or electronic equipment, request necessary information from your retailer or supplier.

### Disposal in Other Countries Outside the European Union

To dispose of this product elsewhere, request necessary information on the correct disposal method from local authorities or your retailer.

Changes to text and technical parameters are reserved.

FAST ČR, a.s.  
U Sanitasu 1621  
CZ-251 01 Říčany  
[www.sencor.com](http://www.sencor.com)  
[info@sencor.cz](mailto:info@sencor.cz)